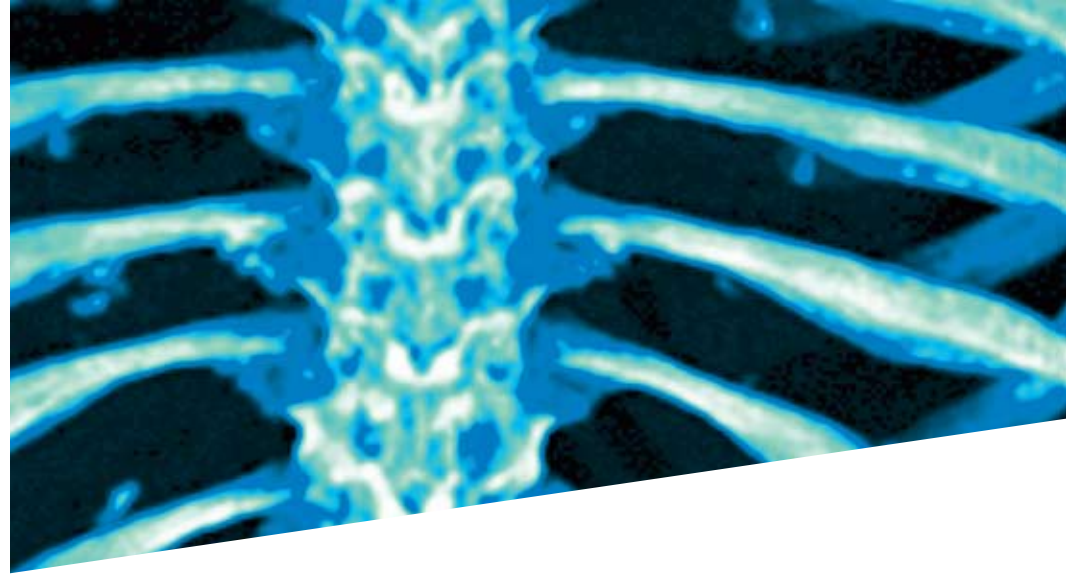


For more information, please contact Neuisys:
877.299.9052
info@neuisys.com
www.neuisys.com

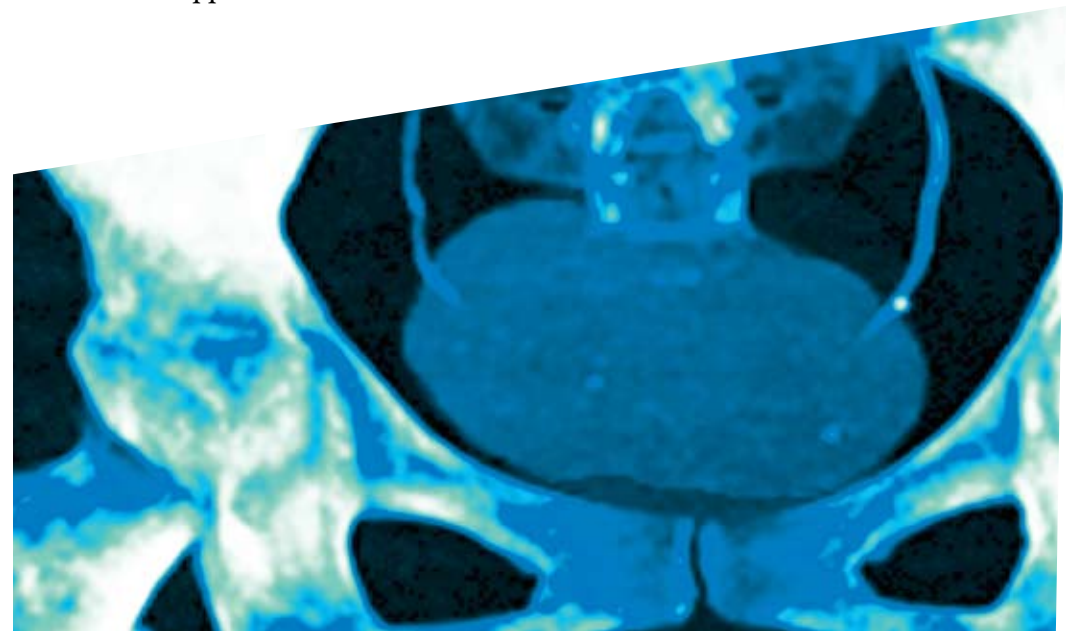


New Groundbreaking software for the clinical Urologist!

UroCARETM

FDA Approved

neuisys



What is UroCARE?

UroCARE™ is a unique, FDA cleared software package for the “computer-assisted” evaluation of the urinary system using advanced image processing algorithms.

UroCARE’s advanced functionality provides:

- Exclusive KUB view
- Automatic-segmentation of kidneys, ureters, bladder
- Detection of urinary calculi
- Advanced visualization and planning tools

KUB radiography has long been a key part of the daily routine for urology practices. UroCARE’s KUB-view can eliminate the need for a dedicated radiography room or the need for patient to go to another facility for a KUB.

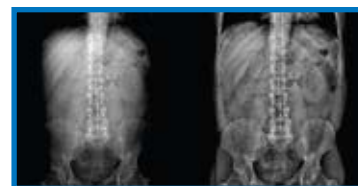
Clinical uses of UroCARE:

- Differentiation of phleboliths from stones
- Skin to stone distance measurements
- Lithotripsy planning

UroCARE provides a suite of easy to use, advanced visualization tools including:

- Multi-planar reconstruction (MPR)
- Maximum intensity projection (MIP) for 3D pyelogram
- Volume Rendering (VR)
- “MIP-glass” window during MPR soft-tissue viewing

Neusoft Medical developed UroCARE for the NeuViz Dual and NeuViz 16 multi-slice CT systems. UroCARE also supports DICOM 3.0 for image networking.



CT scout view.



Rotatable MIP image with view direction indicator.



Stone quantification.



MIP view and operating toolbar.



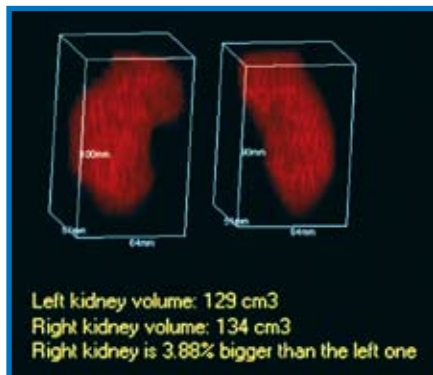
UroCARE detects urinary calculus automatically.



VR view of segmented kidney and calculus.



3D kidney images fused into 2D KUB view.



3D volume rendering (VRT).



Edward Janosko, M.D., Atlantic Urology in Wilmington, North Carolina Former Chief of Urology at Pitt Memorial Hospital/ECU School of Medicine.

“UroCARE was specifically designed for the urologic surgeon to facilitate decision making for ureteroscopy or lithotripsy. UroCARE enables the display of the entire collecting system as a 3-D pyelogram, which urologists are accustomed to reviewing for the detection of filling defects and to separate phleboliths from stones. UroCARE can also assist with the selection of an optimal percutaneous tract for nephrostolithomy. All of these capabilities are completed with a few clicks of the mouse. I know of no other system that can do this.”